

EFORT

ESR20-4-800

ESR20-4-800,
Maxium payload 20 kg with maxium reach 800 mm.

- Highlights
- Upgraded in reliability, versatility and user-friendliness;
Features for high-precision assembly and high speed sorting applications;
The acceleration and deceleration can be automatically optimized with the
assessment of the load and orientation to improve production efficiency.
- Applications
- It can be used in handling, sorting, assembly, etc.
- Industries
- Suitable for 3C, food and beverage, metal parts, education, plastics,
pharmaceuticals, etc.

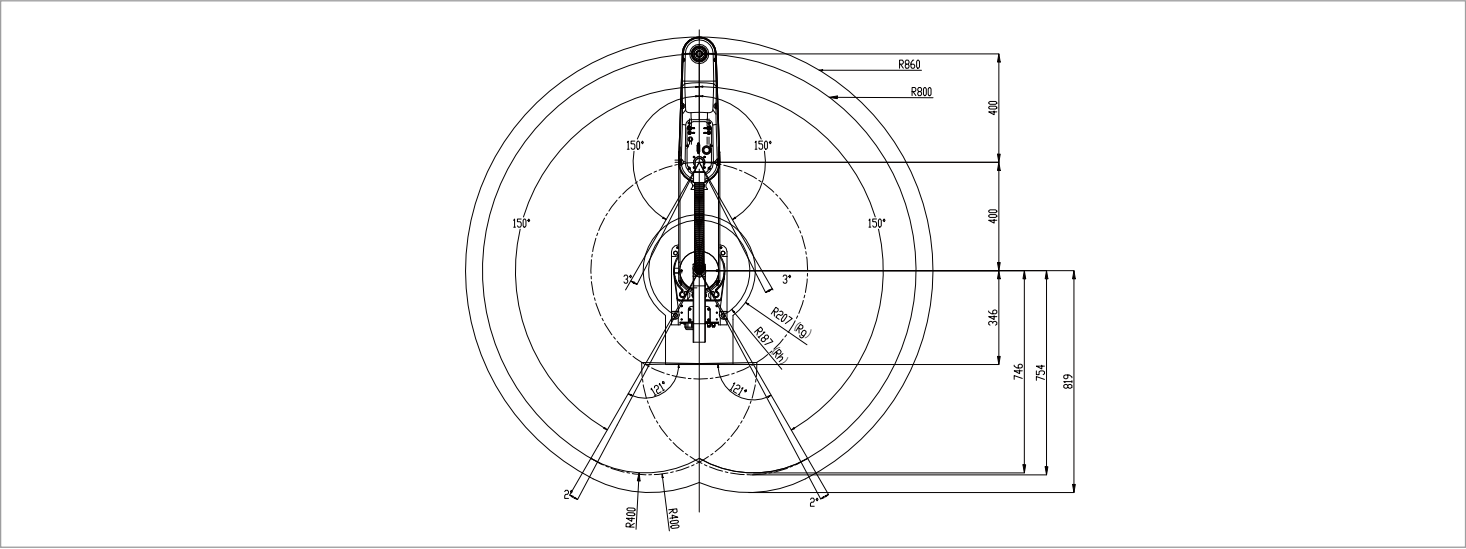


SPECIFICATIONS

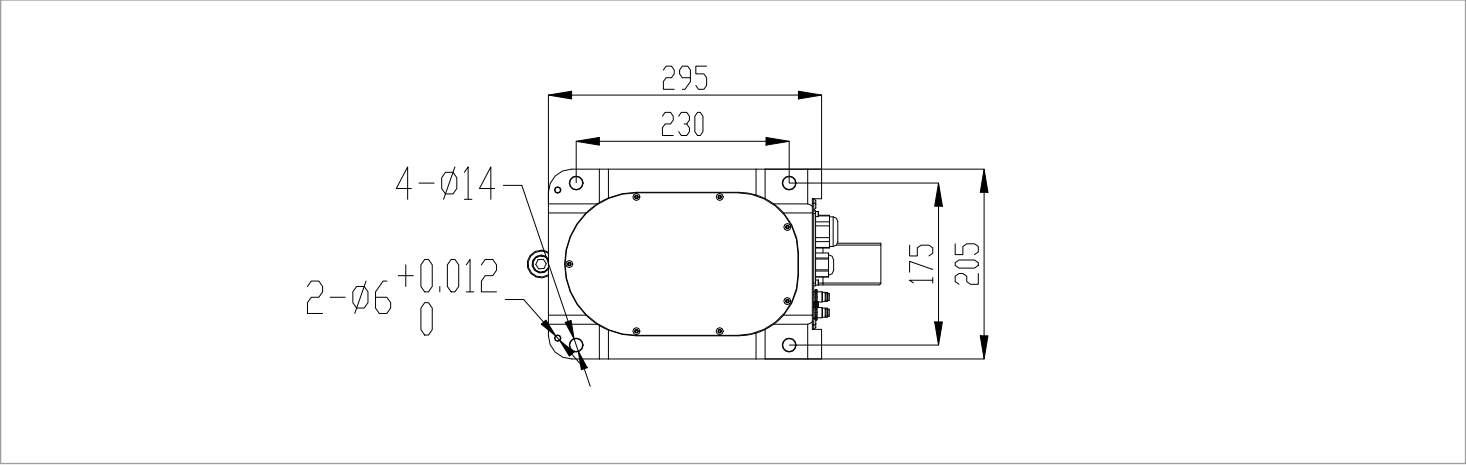
| | | |
|--------------------------------|---------------------|-----------------------------------|
| Model | | ESR20-4-800 |
| Reach | | 800 mm |
| Max. payload on wrist | Rated | 10 kg |
| | Maximum | 20 kg |
| Robot weight | | 41 kg |
| Maximum speed | J1+J2 | 9330 mm/sec |
| | J3 | 1100 mm/sec |
| | J4 | 1385°/sec |
| Motion range | J1 | ±150° |
| | J2 | ±150° |
| | J3 | 300 mm |
| | J4 | ±360° |
| Repeatability | J1+J2 | ±0.025 mm |
| | J3 | ±0.01 mm |
| | J4 | ±0.01° |
| Standard cycle time | | 0.387 s |
| J4 allowable moment of inertia | Rated | 0.05 kg•m² |
| | Maximum | 0.45 kg•m² |
| Electric lines | | D-Sub 15-Pin |
| Pneumatic lines | | φ4 mmx2,φ6 mmx2 |
| J3 downward force | | 250 N |
| Installation | | Floor |
| Installation enviroment | Ambient temperature | 0~40℃ |
| | Ambient humidity | RH≤80% (No dew nor frost allowed) |

*The final interpretation right belongs to EFORT Intelligent Robot Co., Ltd. Any updates will be made without prior notice.

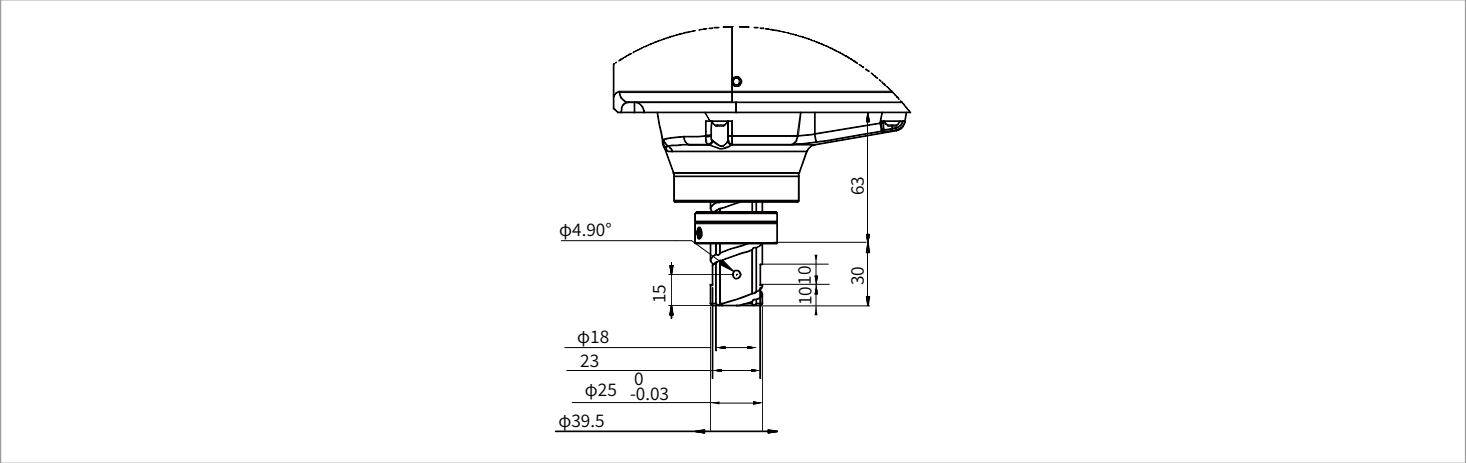
OPERATING SPACE



BASE MOUNTING SIZE



END FLANGE MOUNTING SIZE



Information Release Time 2025/04

PHONE: (00 86) 400-052-8877
ADDRESS: No. 96, Wanchun East Road, Wuhu,
China (Anhui) Pilot Free Trade Zone
WWW.EFORT.COM.CN

EFORT Intelligent Robot Co., Ltd.